

# Envita Hype Collection

The most advanced  
wireless CT-clamps.

This premium collection of current transformers sets a new standard for the industry. With advanced power harnessing technology, these fully wireless clamps draw power directly from the current its to power the chip inside.

**This means no batteries, no maintenance, and perpetual monitoring.**

The design ensures easy, non-invasive installation without the need to cut power, making it effortless to set up. With impressive long-range capabilities, these clamps are engineered for optimal performance and convenience.

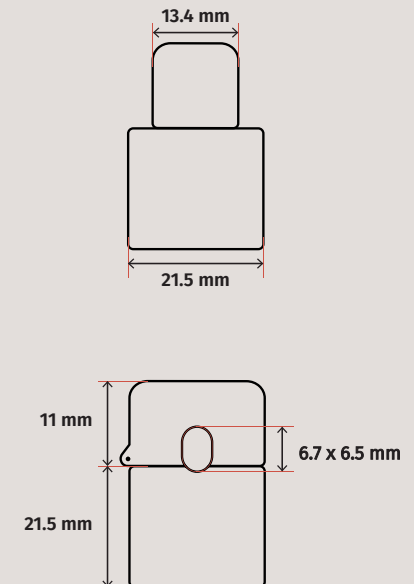
Once snapped on, the clamp automatically transmits data to the Envita Flow platform for analysis.

## Hype 60

Dimensions	See illustration
Max wire diameter	6.5 mm / 0.26 inch
Measurement range	0.5-63 A
Measurement accuracy	<2 % for currents above 1 A
Minimum operating current	0.5 A
AC frequency	50 Hz / 60 Hz
Sampling frequency	400 Hz
Transmission frequency	2.4 GHz
Networking protocol	OpenThread
Certifications	CE (others on request)
Transmission rate	5 s
Transmission range	Up to 30 meters / up to 98 feet



### Dimensions



# Envita Hype Collection

The most advanced  
wireless CT-clamps.

This premium collection of current transformers sets a new standard for the industry. With advanced power harnessing technology, these fully wireless clamps draw power directly from the current its to power the chip inside.

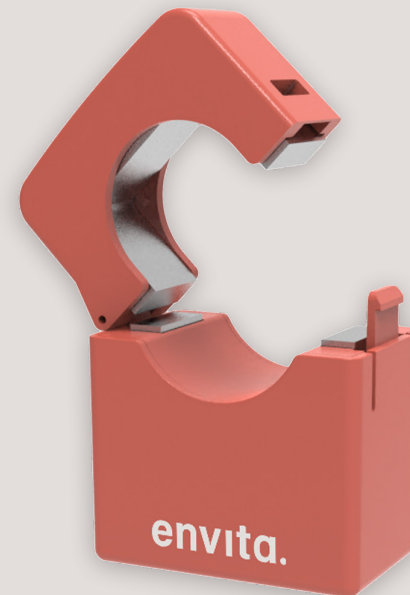
**This means no batteries, no maintenance, and perpetual monitoring.**

The design ensures easy, non-invasive installation without the need to cut power, making it effortless to set up. With impressive long-range capabilities, these clamps are engineered for optimal performance and convenience.

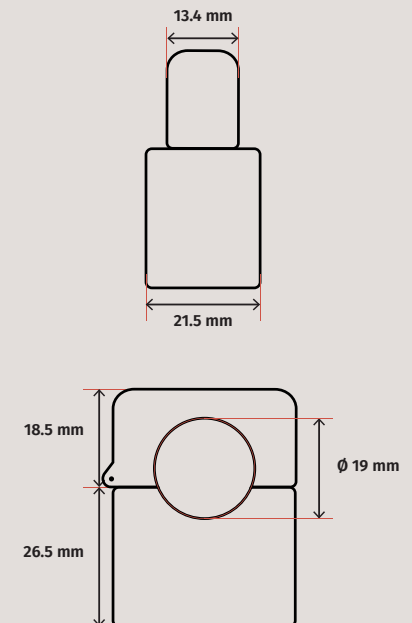
Once snapped on, the clamp automatically transmits data to the Envita Flow platform for analysis.

## Hype 225

Dimensions	See illustration
Max wire diameter	18.7 mm / 0.74 inch
Measurement range	2-225 A
Measurement accuracy	<2 % for currents above 10 A
Minimum operating current	2 A
AC frequency	50 Hz / 60 Hz
Sampling frequency	400 Hz
Transmission frequency	2.4 GHz
Networking protocol	OpenThread
Certifications	CE (others on request)
Transmission rate	5 s
Transmission range	Up to 30 meters / up to 98 feet



### Dimensions



# Envita Hype Collection

The most advanced wireless CT-clamps.

This premium collection of current transformers sets a new standard for the industry. With advanced power harnessing technology, these fully wireless clamps draw power directly from the current its to power the chip inside.

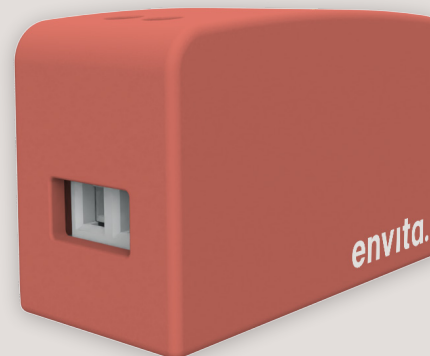
**This means no batteries, no maintenance, and perpetual monitoring.**

## Hype X

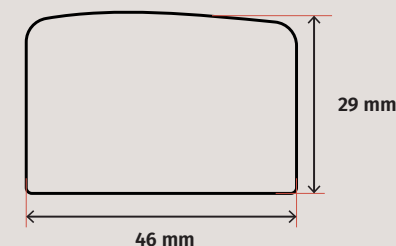
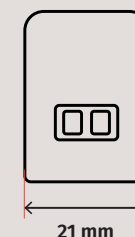
Dimensions	See illustration
Measurement range	Any (recommended >225 A)
Measurement range (input current)	0-5 A
Measurement accuracy (input current)	<2 % for currents above 0.1 A
Minimum operating current (input current)	0.05 A
AC frequency	50 Hz / 60Hz
Sampling frequency	400 Hz
Transmission frequency	2.4 GHz
Networking protocol	OpenThread
Certifications	CE (others on request)
Transmission rate	5 s
Transmission range	Up to 30 meters / up to 98 feet

The design ensures easy, non-invasive installation without the need to cut power, making it effortless to set up. With impressive long-range capabilities, these clamps are engineered for optimal performance and convenience.

Hype X can be connected to most CT-clamps on the market, making old hardware fully wireless. Once mounted on, the clamp automatically transmits data to the Envita Flow platform for analysis.



### Dimensions



# Envita Hype Collection

The most accurate  
wireless CT-clamps.

A compact and reliable data bridge designed for seamless connectivity. The gateway receives all wireless sensor data and securely forwards it to the Envita Flow platform for real-time insight and analysis.

**Built for high stability and effortless deployment.**

## Hype Link

Dimensions	See illustration
Weight	90g
Power supply	USB-C ( $\geq 5V2A$ DC input)
Power consumption	Maximum instantaneous power : 6W Standby power : 1W
Supported network interfaces	Ethernet / WiFi / Cellular / Bluetooth
Sensor communication protocol	OpenThread (AES-128 Encryption)
Sensor radio frequency	2.4 GHz
Sensor reception sensitivity	-101.5dBm
Maximum recommended sensors	50 sensors
Sensor communication range	30 meters
Internal backup storage	2.5 MB
Wi-Fi protocol	IEEE 802.11 b/g/n (2.4 GHz)
Wi-Fi security protocol	WPA2-PSK, WPA3-SAE, WPA3-OWE
Safety & EMC certification	CE
Enclosure flammability rating	UL94-V0
Operating temperature	-40°C to +65°C
Storage temperature	-40°C to +105°C

### Dimensions

